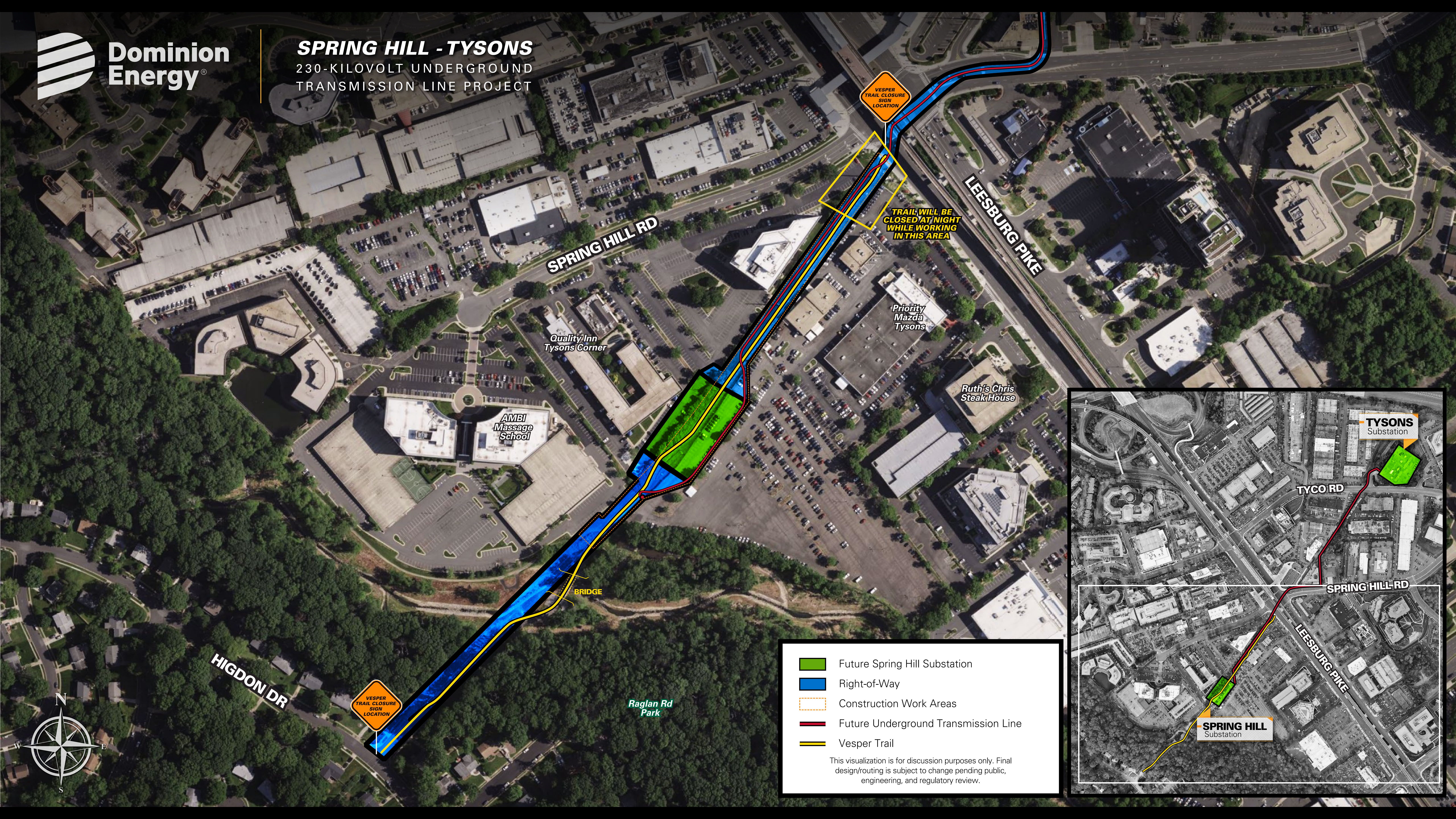




SPRING HILL - TYSONS

230-KILOVOLT UNDERGROUND
TRANSMISSION LINE PROJECT



VESPER TRAIL CLOSURE SIGN LOCATION

TRAIL WILL BE CLOSED AT NIGHT WHILE WORKING IN THIS AREA

SPRING HILL RD

LEESBURG PIKE

Quality Inn Tysons Corner

Priority Mazda Tysons

Ruth's Chris SteakHouse

AMBI Massage School

BRIDGE

Raglan Rd Park

HIGDON DR

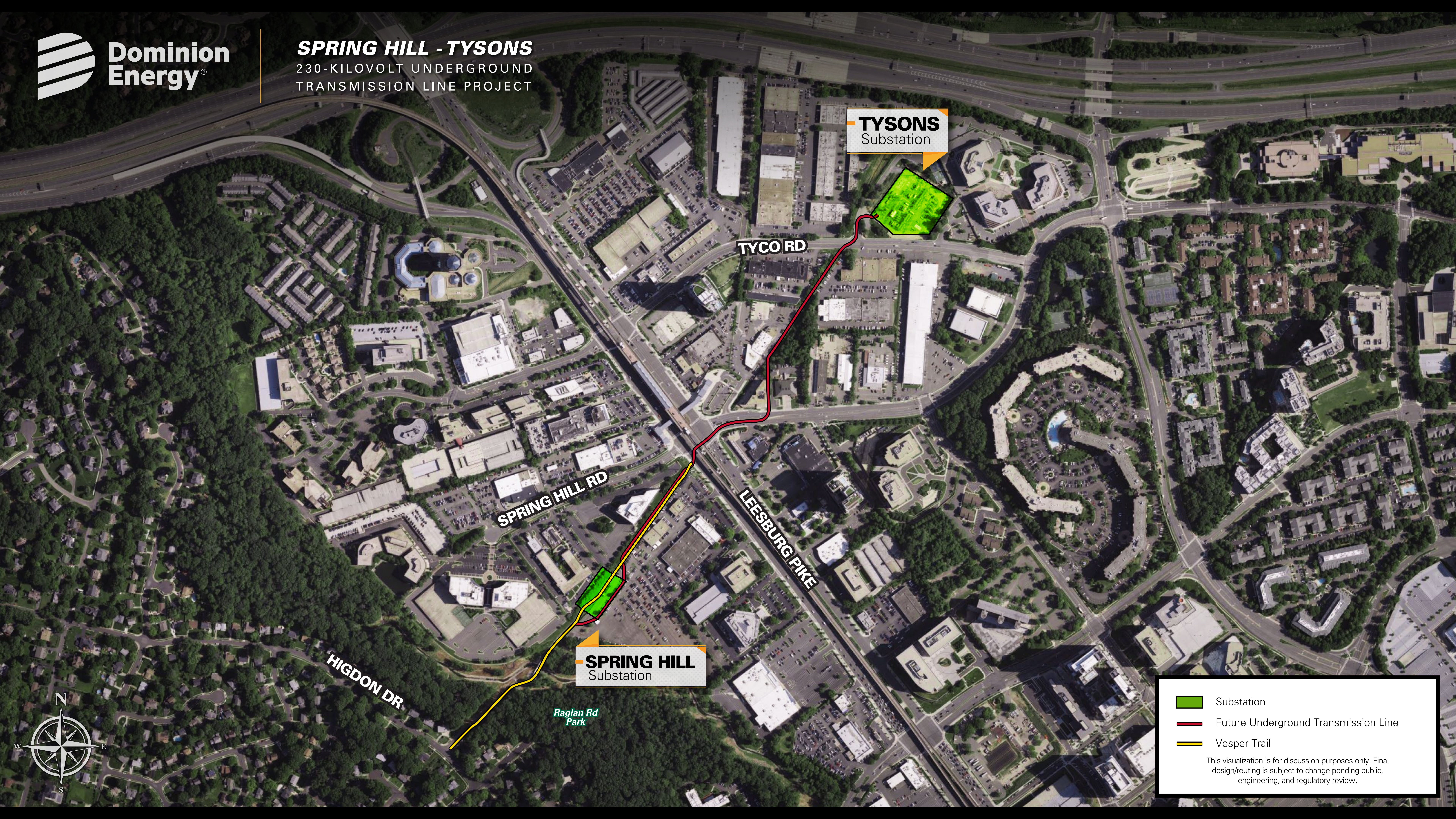
VESPER TRAIL CLOSURE SIGN LOCATION

- Future Spring Hill Substation
- Right-of-Way
- Construction Work Areas
- Future Underground Transmission Line
- Vesper Trail

This visualization is for discussion purposes only. Final design/routing is subject to change pending public, engineering, and regulatory review.



SPRING HILL - TYSONS
230-KILOVOLT UNDERGROUND
TRANSMISSION LINE PROJECT



TYSONS
Substation

TYCO RD




SPRING HILL RD

LEESBURG PIKE

HIGDON DR

SPRING HILL
Substation

Raglan Rd
Park

-  Substation
-  Future Underground Transmission Line
-  Vesper Trail

This visualization is for discussion purposes only. Final design/routing is subject to change pending public, engineering, and regulatory review.

